



BERES



60

Precision.

Performance.

Perfection.

DRIVER / LADIES

DESIGN

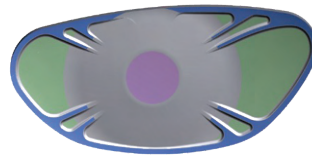


TECHNOLOGY



Solid Carbon

High-strength lightweight carbon material on the toe side of the sole results in CG design that empowers the average golfer with a draw bias, providing a significant advantage. The surplus weight resulting from the incorporation of carbon is expertly positioned on the heel side for superior performance.



Quad Bridge Powerface

Our newly developed face incorporates an intricate uneven thickness design, meticulously engineered to optimize repulsion power. To harness this efficiency to the fullest, we pushed the boundaries to approach a circular profile. The quad bridge structure provides exceptional support, elevating the power output and significantly enhancing repulsion capabilities.



Push Back & Draw Bias Weight

We strategically positioned a aluminum weight (4g) at the rear of the head instead of the sole. This design effectively converts impact energy into a repulsive force, propelling it backward to enhance initial velocity for an amplified impact.

SPECIFICATION

DRIVER	CLUB		1W		
	LOFT (deg.)		11.5°		
	LIE ANGLE (deg.)		60.0°		
	HEAD VOLUME (cc)		460		
	LENGTH (inch)		44.25"		
	SHAFT		ARMRQ FX		
	SWINGWEIGHT / TOTAL WEIGHT (g)		L	C0 / 262	A

DRIVER	Flex	Length (mm)	Tip (mm)	Butt (mm)	Weight (g)		Frequency (CPM)		Torque (deg)			Kick Point		
					2S / 3S	4S / 5S	2S / 3S	4S / 5S	2S / BK	3S	4S	5S	2S / 3S	4S / 5S
					ARMRQ FX	A	1,117	8.6	15.3	41.5	41.5	211.0	211	8.05
L	1,117	8.6	15.3	40.0		40.0	203.0	203.0	8.10	7.70	7.50	7.35	MID LOW	LOW



BERES



Precision.

Performance.

Perfection.

60
FAIRWAY / LADIES

DESIGN

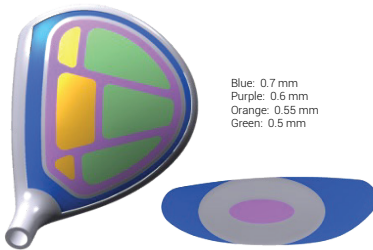


TECHNOLOGY



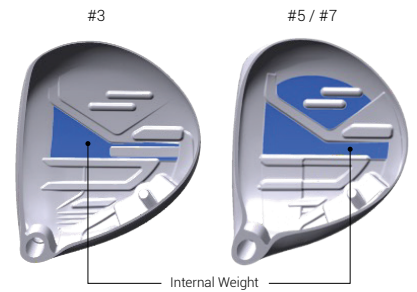
Tungsten Nickel Weight: 14g

By placing the weight closer to the back heel, the ball-catching performance has been improved.
CG Angle +5.0°



Uneven Thickness Face & Crown

Improved repulsion performance by thinning the face and crown. Furthermore, the repulsion area has been expanded.



Designed Specifically for Each Club

The internal weight of 3W has a CG design that emphasizes long distance, and the 5W and 7W have a CG design that emphasizes directionality, achieving the performance required of the club.

SPECIFICATION

FAIRWAY	CLUB		3W	5W	7W
	LOFT (deg.)		16°	19°	22°
	LIE ANGLE (deg.)		59.0°	59.5°	60.0°
	HEAD VOLUME (cc)		175	162	150
	LENGTH (inch)		41.75"	41.25"	40.75"
	SHAFT		ARMRQ FX	ARMRQ FX	ARMRQ FX
SWINGWEIGHT / TOTAL WEIGHT (g)		L	C0 / 279	C0 / 283	C0 / 287
		A	C1 / 282	C1 / 286	C1 / 290

FAIRWAY	Flex	Length (mm)	Tip (mm)	Butt (mm)	Weight (g)		Frequency (CPM)		Torque (deg)				Kick Point	
					2S / 3S	4S / 5S	2S / 3S	4S / 5S	2S / BK	3S	4S	5S	2S / 3S	4S / 5S
ARMRQ FX	A	1,065	8.6	15.3	41.0	41.0	229.0	229.0	7.55	7.15	6.95	6.80	MID LOW	LOW
	L	1,065	8.6	15.3	39.5	39.5	221.0	221.0	7.60	7.20	7.00	6.85	MID LOW	LOW



BERES



09

Precision.

Performance.

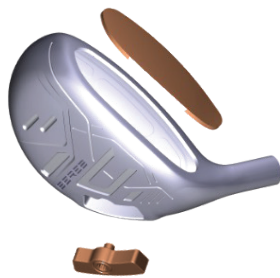
Perfection.

HYBRID / LADIES

DESIGN



TECHNOLOGY



Tungsten Nickel Weight: 14g

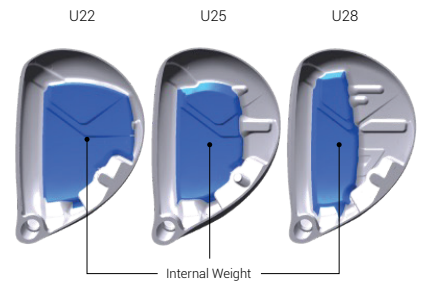
Positioned near the back heel, enhancing ball-catching performance. Achieving a CG Angle of +5.0°



Blue: 0.7 mm
Purple: 0.6 mm
Orange: 0.55 mm
Green: 0.5 mm

Asymmetrical Thickness in Face & Crown

Enhanced repulsion through face and crown thinning. Expanding the repulsion area for superior performance.



Tailored Design for Every Golf Club

Sole thickness and CG flow meticulously crafted for each club. Precision-engineered to deliver ideal spin and green-stopping performance for every club.

SPECIFICATION

HYBRID	CLUB		4U	5U	6U
	LOFT (deg.)		22°	25°	28°
	LIE ANGLE (deg.)		59.5°	59.5°	59.5°
	HEAD VOLUME (cc)		136	136	136
	LENGTH (inch)		39.0"	38.5"	38.0"
	SHAFT		ARMRQ FX	ARMRQ FX	ARMRQ FX
	SWINGWEIGHT / TOTAL WEIGHT (g)				
	L	C0 / 299	C0 / 304	C0 / 309	
	A	C1 / 302	C1 / 307	C1 / 312	

HYBRID	ARMRQ FX	Flex	Length (mm)	Tip (mm)	Butt (mm)	Weight (g)		Frequency (CPM)		Torque (deg)				Kick Point	
						2S / 3S	4S / 5S	2S / 3S	4S / 5S	2S / BK	3S	4S	5S	2S / 3S	4S / 5S
						A	1,004	9.3	15.2	40.5	40.5	240.0	240.0	7.55	7.15
L	1,004	9.3	15.2	39.0	39.0	232.0	232.0	7.60	7.20	7.00	6.85	MID LOW	LOW		



BERES



60

Precision.

Performance.

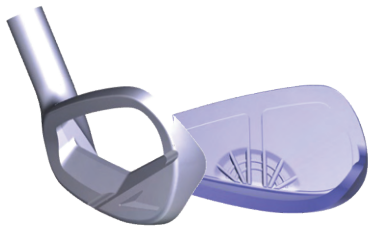
Perfection.

IRON / LADIES

DESIGN

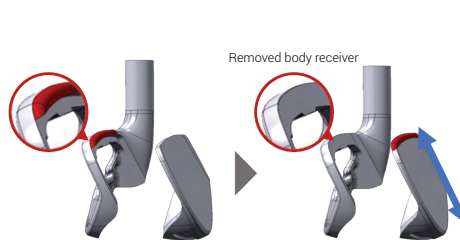


TECHNOLOGY



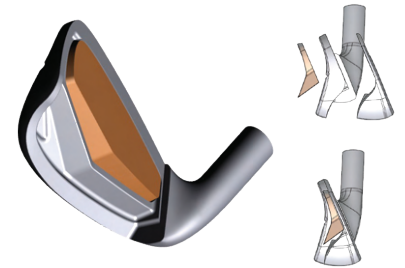
Revolutionary Semi-Circle Face Structure

Delivers exceptional repulsion performance, resisting hitting point variation in both vertical and horizontal directions.



Innovative Wide L-Cup Face

Expanding the face's surface, we enhance the repulsion area, ultimately boosting flight distance performance and minimizing dispersion even on off-center hits.



Integrated Vibration-Absorbing Resin Mid-Layer

Crafted with an inner cavity filled with vibration-absorbing resin, it quells vibrations upon impact, ensuring a pleasant hitting sensation and sound.

SPECIFICATION

IRON	CLUB	#6	#7	#8	#9	#10	#11	SW
	LOFT (deg.)	27.0°	30.0°	34.0°	38.0°	43.0°	49.0°	56.0°
LIE ANGLE (deg.)	61.5°	62.0°	62.5°	63.0°	63.0°	63.0°	63.5°	
OFFSET (mm)	3.5	3.5	3.5	3.5	3.5	3.0	2.5	
SHAFT	ARMORQ FX							
LENGTH (inch) 60° method	36.5"	36.0"	35.5"	35.0"	34.5"	34.0"	34.0"	
SWINGWEIGHT / TOTAL WEIGHT (g)	L	C1 / 331	C1 / 338	C1 / 344	C1 / 351	C1 / 357	C1 / 364	C2 / 366
	A	C1 / 333	C1 / 340	C1 / 346	C1 / 353	C1 / 359	C1 / 366	C2 / 368

IRON	Flex	Length (mm)	Tip (mm)	Butt (mm)	Weight (g)		Frequency (CPM)		Torque (deg)				Kick Point	
					2S / 3S	4S / 5S	2S / 3S	4S / 5S	2S / BK	3S	4S	5S	2S / 3S	4S / 5S
					ARMORQ FX	A	923	9.3	14.3	41.5	41.5	240.0	240.0	4.83
L	923	9.3	14.3	40.0		40.0	232.0	232.0	4.88	4.48	4.28	4.13	MID LOW	LOW